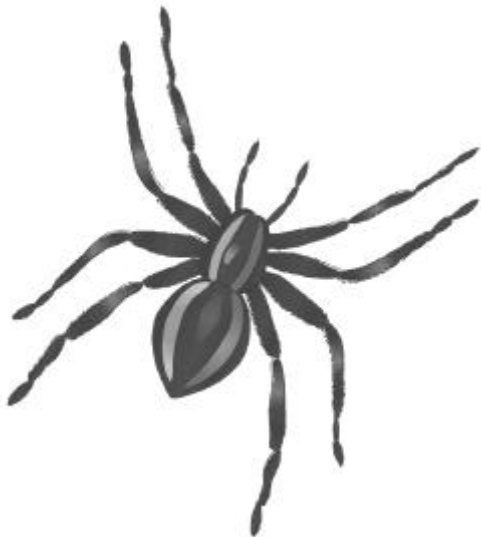


Creepy Crawly Classrooms

Did you know that you are never more than 30 centimetres from a creepy crawly? Sometimes you are much closer! This page lists some of the different types of minibeast you might find in your school (or house!). See how many you can find!

Woodlice

Woodlice are sometimes called pillbugs or slaters. They are a special type of minibeast called crustaceans. They have 14 legs hidden underneath their hard body. Woodlice like dark, damp places and can often be found in undisturbed corners in old houses. A common woodlouse can live for up to four years.

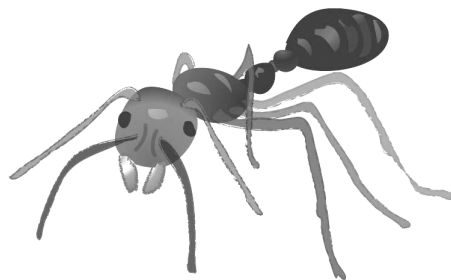


Spiders

A lot of people are scared of spiders but in this country they are completely harmless. They have eight long legs and can usually run really fast. There are two different types of spiders - ones that spin a web to catch their food and others that run after other minibeasts to catch them and eat them! Many spiders come inside during the winter to escape the cold weather.

Ants

Ants are really clever minibeasts. They live together in huge colonies where every ant has a special job to do. They like eating sweet foods and they are often found inside buildings looking for any spilled food.



Silverfish

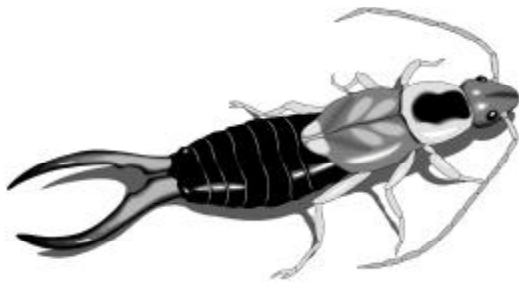
Silverfish aren't really fish, they are small wingless insects. You can find them in damp, dark places inside buildings where they feed on paper, glue and spilled food in cupboards.

You don't often see them though because they only come out at night. They can run very fast so they are really difficult to catch!



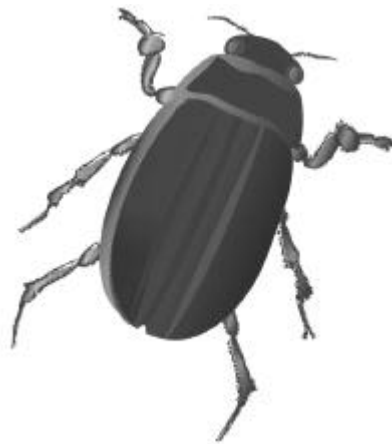
Beetles

There are about 4000 different types of beetles known from Britain. Most of them have special hardened wing covers which makes their back seem really tough. Some beetles live in houses where they feed upon all sorts of things, from spilled food and paper, to carpets and even wood!



Flies

Many minibeast have the word 'fly' in their name, however true-flies are a special group of insects. They have only one pair of wings and a special pair of lollipop shaped balancing organs called halteres. There are over 5000 different types of true-flies in Britain alone!



Earwigs

Earwigs usually live outside, but in the winter they come inside for the warmth. During the day they hide in dark places and at night they come out to hunt for their food.

Although they look like they could give you a nip with their pincers, they're actually completely harmless!